



PRESS RELEASE

MONDAY 05 MARCH 2018

CONTACT US:
HDH.GFI@FORRESTGROUP.COM

REGARDS:
DEVELOPMENT OF THE FORREST GROUP INDUSTRY DEPARTMENT

1. SUMMARY

THE FORREST GROUP IS STRENGTHENING ITS INDUSTRIAL ACTIVITIES IN THE DRC WITH THE CREATION OF TWO NEW COMPANIES, AMF AND CSE. AEMI, FOR ITS PART, IS NOW OFFICIALLY CERTIFIED BY SIEMENS.

THE FORREST GROUP INDUSTRY DEPARTMENT OFFERS A RANGE OF SERVICES AND PRODUCTS, UNIQUE IN THE DRC, IN THE MECHANICAL, METALS, ELECTRICAL & FOUNDRY FIELDS.

1. SUMMARY	page 1
2. PRESS RELEASE	page 2
3. OVERVIEW OF THE INDUSTRY DEPARTMENT	pages 3-4

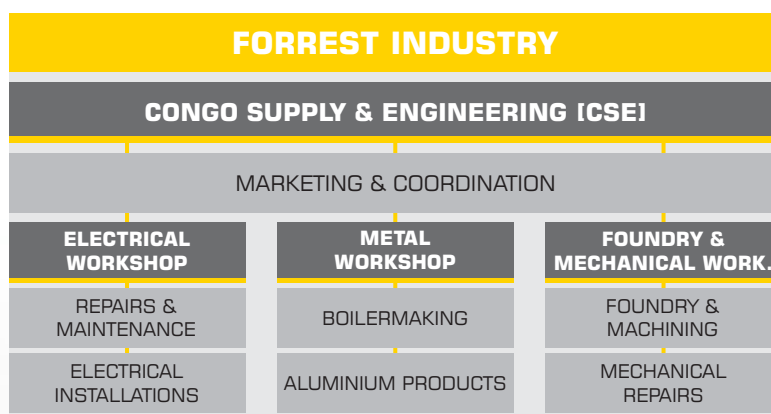
2. PRESS RELEASE

The FORREST GROUP is strengthening and diversifying the activities of its INDUSTRY DEPARTMENT in the Democratic Republic of the Congo [DRC] with the creation of ATELIER MECANIQUE ET FONDERIE SAS [AMF] and CONGO SUPPLY AND ENGINEERING SAS [CSE].

The FORREST GROUP INDUSTRY DEPARTMENT offers a range of high quality services and products, unique in the country, which covers the Mechanical, Metals, Electrical and Foundry fields. It includes among its clients most of the large industrial companies active in the DRC.

CONGO SUPPLY & ENGINEERING:

The FORREST GROUP has, in parallel with the creation of AMF, formed CONGO SUPPLY AND ENGINEERING SAS (CSE). The purpose of CSE is to develop the INDUSTRY DEPARTMENT and increase the synergies between the three companies that comprise it, AMF, NBLIA and AEMI.



MALTA DAVID FORREST, EXECUTIVE VICE-PRESIDENT AND CEO OF THE FORREST GROUP:

"[...] The FORREST GROUP INDUSTRY DEPARTMENT includes among its clients most of the large industrial companies active in the DRC, in particular those involved in mining, energy, oil, breweries, etc. Our strategy in this area in recent years has been to develop and to offer them services and products of a quality that is at least similar to what they previously sought outside the country. The creation of CSE and AMF accords with this same logic, which is favourable to economic activity and employment in the DRC. The recognition of AEMI by SIEMENS and CONGO ENERGY by SCHNEIDER ELECTRIC are for their part proof our reliability and expertise. I am convinced that this activity has strong growth potential and will become one of the future pillars of the FORREST GROUP's development [...]"

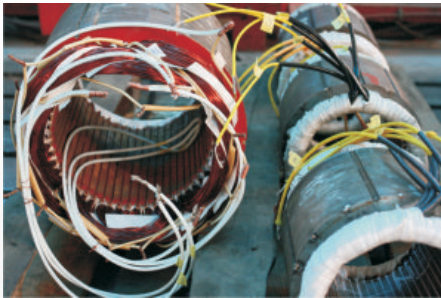
3. OVERVIEW OF THE INDUSTRY DEPARTMENT

The products and services of the INDUSTRY DEPARTMENT are marketed by CONGO SUPPLY & ENGINEERING [CSE].

ELECTRICAL WORKSHOP

Since 2017, AEMI has been officially certified for the distribution, repair and maintenance of Siemens products in the DRC. As such, AEMI is the only company in the country able to sell, put into service, maintain and repair motors, automation products and speed controllers of the Siemens brand.

REPAIRS



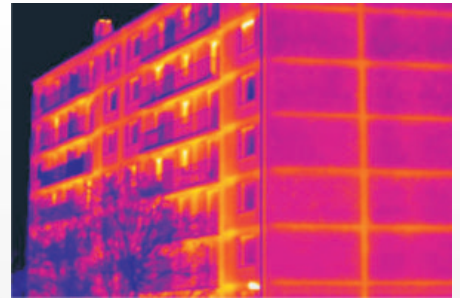
AEMI rehabilitates various electrical machines, both in its Kinshasa and Likasi workshops and on site: stabilisers, motors, alternators, transformers, etc. The company is specialised in winding.

INSTALLATIONS



AEMI offers services for designing and setting-up electrical installations, for both the Industrial and Construction sectors: electric cabinets, programmable controllers, etc.

MAINTENANCE



AEMI offers maintenance services, including preventive maintenance and is specialised in analysing the quality of networks. It is equipped to carry out inspections using infrared thermography.

METAL WORKSHOP

ASSEMBLY



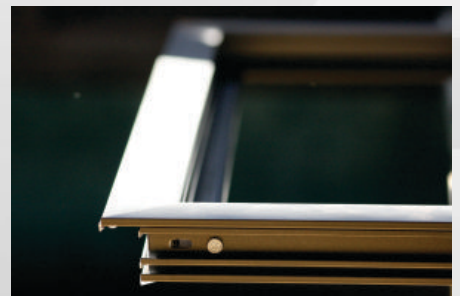
NBLIA is specialised in designing, manufacturing and assembling metal structures, in particular factories, warehouses, hangars, etc.

BOILERMAKING



NBLIA designs and manufactures metal products, according to the specific requests of its clients [various size tanks, siding sheets, metal frames, etc.].

ALUMINIUM



NBLIA produces aluminium frames of all possible sizes, of constant quality thanks to its European assembly line.

FOUNDRY & MECHANICAL WORKSHOP

FOUNDRY



AMF is specialised in foundry. It also has many moulds that are specific for the types of machines used in Congolese industries.

MACHINING



AMF manufactures high precision parts, according to the specifications and specific requests formulated by its clients.

REPAIRS



AMF is specialised in mechanical repairs, for example, pumps, motors, gear units, etc.