



PRESS RELEASE

FRIDAY 26 JANUARY 2018

CONTACT US:
HDH.GFI@FORRESTGROUP.COM

REGARDS:
REHABILITATION OF TG 6 OF THE HYDROELECTRIC POWER STATION OF SANGA

1. SUMMARY
THE HYDROELECTRIC POWER STATION OF SANGA IS ONCE AGAIN CONNECTED TO THE SNEL NATIONAL GRID FOR THE FIRST TIME IN 20 YEARS. THE TURBINE GENERATOR 6 HAS BEEN REHABILITATED AND IS PRODUCING ELECTRICITY.
THE POWER STATION REHABILITATION PROJECT IS FUNDED BY THE FORREST GROUP. MANAGEMENT OF THE PROJECT AND WORK ON THE SITE HAVE BEEN ENTRUSTED RESPECTIVELY TO THE CONGOLESE COMPANIES NSM HYDRO AND AEMI.

1. SUMMARY	page 1
2. PRESS RELEASE	page 2
3. PHOTOS	pages 3 - 6

2. PRESS RELEASE

The Hydroelectric Power Station of Sanga, an asset owned by SOCIÉTÉ NATIONALE D'ÉLECTRICITÉ [SNEL], has been connected to the SNEL national grid on 30 November 2017. It had no longer been connected since 1997. The turbine generator number 6 [TG 6] of the power station has been rehabilitated and is producing electricity.

Rehabilitation of the TG 6 is part of Phase 1 of the project for rehabilitating the Hydroelectric Power Station of Sanga, funded by the FORREST GROUP. Management of the project and work on the site have respectively been entrusted to the Congolese companies NSM HYDRO* and ATELIERS D'ELECTRO-MAINTENANCE INDUSTRIELLE (AEMI)**.

Work is continuing on TG 1 and TG 4 which are scheduled to go into service in the first half of 2018. The three turbine-generator sets have an overall generation capacity of 6 MW.

Apart from the units, the project has rehabilitated the foot and head valves of the penstocks, the Medium and Low Voltage auxiliary electricity systems and the High Voltage substation. Work on the site began in early 2017.

Malta David Forrest, Chairman of the Board of Directors of NSM HYDRO and Executive Vice-Chairman and CEO of the FORREST GROUP said:

"[...] The rehabilitation of Sanga is a demonstration of the reliability and expertise of NSM HYDRO and AEMI. I am delighted that companies linked to the FORREST GROUP are contributing, in partnership with the SNEL, to the revival of electricity production in our country, the Democratic Republic of the Congo [...]"

The hydroelectric power station of Sanga is located twenty kilometres upstream of the Zongo falls, in the District of Lukaya, in the Central Kongo Province. The infrastructure of the hydroelectric power station, built between 1930 and 1950, uses the water of the River Inkisi, a tributary of the River Congo.

* NSM HYDRO is owned by the FORREST GROUP, the majority shareholder, and the Congolese company NSM.

** AEMI is owned by the FORREST GROUP, the majority shareholder, and the SCTP

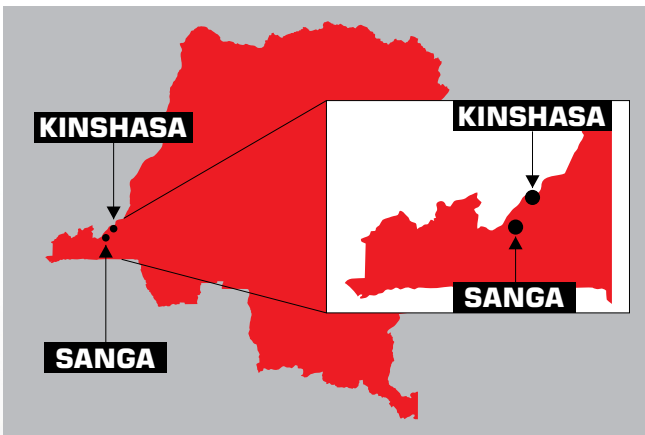
3. PHOTOS

The photos available below show electricity infrastructure belonging to the Société Nationale d'Électricité [SNEL].

SANGA HYDROPOWER STATION



LOCATION



SANGA DAM

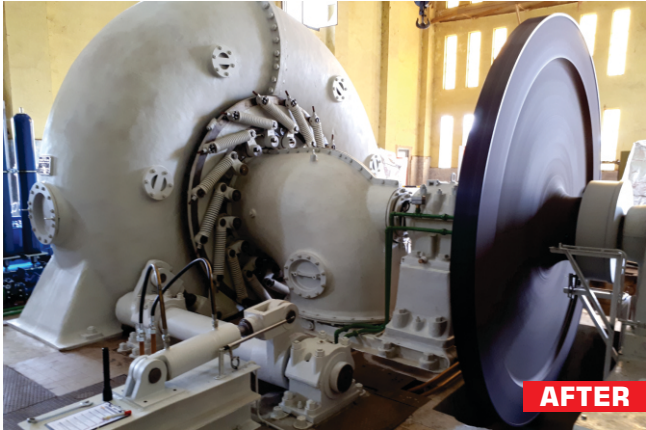
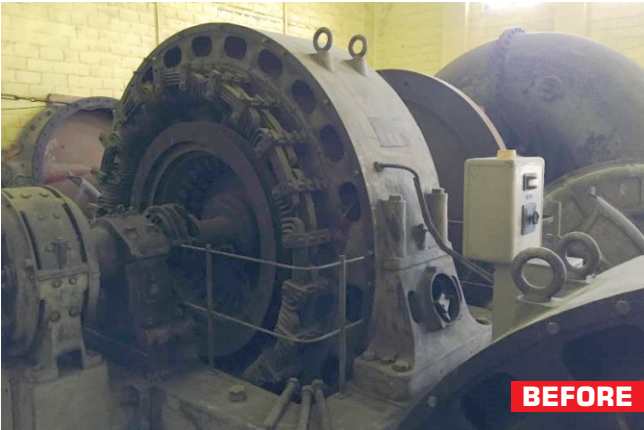


INKISI RIVER

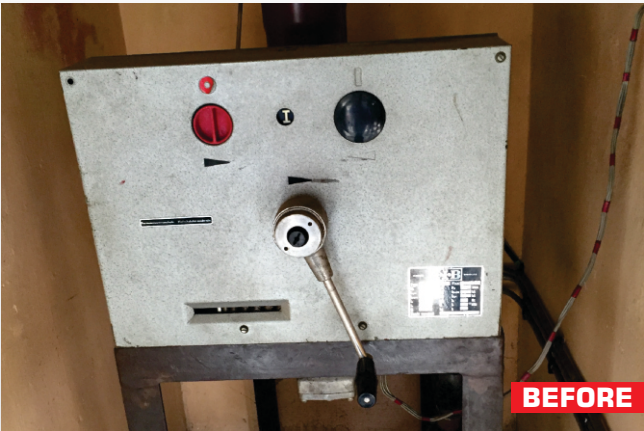




TURBINE GENERATOR 6



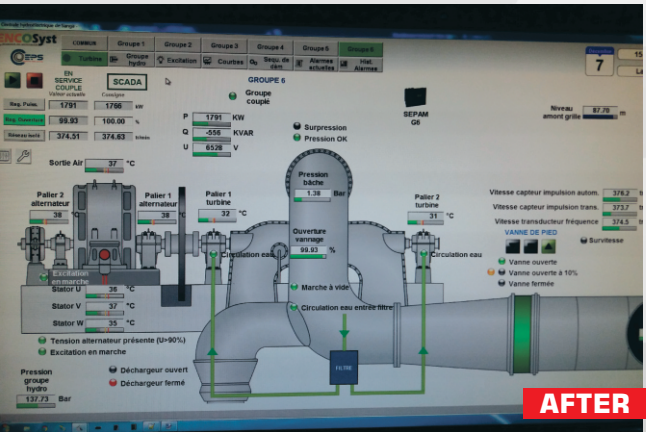
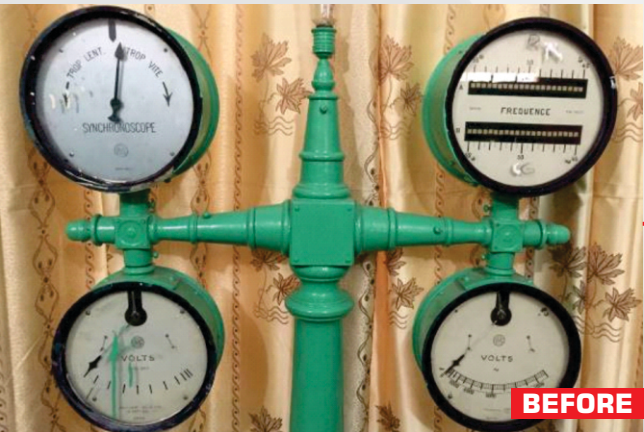
MEDIUM & LOW VOLTAGE AUXILIARIES



HIGH VOLTAGE SUBSTATION



CONTROL-COMMAND





RETURN CANAL

